

 **PILOT**

BORN

to

CREATE

PINTOR

WATER-BASED PIGMENT INK PAINT MARKER

#HAPPYWRITING



PINTOR

CLASSIC



FUN



F
2.9mm*



M
4.5mm*

PASTEL



METAL



- MULTI-SURFACE
- ULTRA-RESISTANT & OPAQUE INK
- DRIES QUICKLY
- PERFECT FOR DIY** ACTIVITIES
- VIVID AND MIXABLE SHADES OF COLOURS
- VERY HIGHLY RESISTANT TIP

*Writing width
** Do it yourself

Everything you need to know

HOW TO PRIME THE TIP

Shake about 20 times before use,
with the cap on.
Prime the tip by pressing 3-4 times
on a piece paper until the ink flows.

ARE PILOT PINTOR PENS REFILLABLE?

Pilot Pintor pens are not refillable.

HOW TO STORE THEM

Store with the tip pointing up.



#HAPPYWRITING



More inspiration on Instagram @pilotnordic

Multi-surface

A PERFECT HOLD ON ANY MATERIAL

	Material compatibility	Line precision	Covering power	How to fix paint for best results & water resistance
Wood				Apply varnish
Melamine wood				160°C 50 min Spray on varnish
Glass				160°C 50 min Spray on varnish
Frosted glass				Spray on varnish
Plastic				Spray on varnish
Metal - Steel				Spray on varnish
Aluminium				/
Paper				/
Carton				/
Polystyrene				/
Porcelain				160°C 50 min Spray on varnish
Fabric				No steam
100% cotton/linen				No steam
Fabric polyester/satin				No steam
Fabric popeline				Specific varnish
Leather				Spray on varnish
Mineral				Spray on varnish



Paper

Nice to know

Compatible with all types of paper, such as drawing paper, dark paper, tracing paper, papier-mâché and more. The ink is absorbed directly, there is no need to fix to make it last.

Tips

Apply thin layers so that the paper does not buckle.

Material compatibility:



Line precision:



Covering power:





Carton

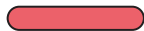
Nice to know

Perfectly suitable for all types of carton: cardboard, solid, corrugated board and more.

Tips

Apply a single layer on the surface.

Material compatibility:



Line precision:



Covering power:





Wood

Nice to know

On wood and other treated lumber, apply a layer of glossy or matt acrylic varnish with a paintbrush to give a nice finish.

Tips

Sand the surface before painting.

Material compatibility:



Line precision:



Covering power:





Glass

Nice to know

Apply 2 layers to get vibrant Pintor colors and great coverage. Put in the oven: 160°C for 50 minutes. As a finishing touch, apply varnish to protect your creation.

Tips

Best compatibility with metal colors.
Wait a few minutes until your paint dries before applying a second layer.

Material compatibility:



Line precision:



Covering power:





Frosted glass

Nice to know

Apply 2 coats to obtain vivid colors and great coverage. Put in the oven: 160°C for 50 minutes. Lastly, apply a varnish to protect your creation.

Tips

Best compatibility with metal colors.
Wait a few minutes until your paint dries before applying a second coat.

Material compatibility:



Line precision:



Covering power:





Porcelain

Nice to know

Apply 2 coats to get vibrant colors and great coverage. Put in the oven: 160°C for 50 minutes. As a finishing touch, apply varnish to protect your creation.

Tips

Best compatibility with metal colors. Wait a few minutes until your creation dries before applying a second coat.

Material compatibility:



Line precision:



Covering power:





Plastic

especially PP

Nice to know

Apply 2 layers to get vibrant colors and great coverage. To protect your creation, use a transparent varnish with a mat or glossy finish, depending on your original plastic's aspect.

Tips

Wait a few minutes until your paint dries before applying a second layer.

Material compatibility:



Line precision:



Covering power:





Metal-Steel

Aluminium - Epoxy coated

Nice to know

Apply 2 coats to get vibrant colors and great coverage. To protect your creation, a transparent varnish can be used as a final touch.

Tips

If you have made a mistake, rinse the paint with clear water before it dries.

Material compatibility:



Line precision:



Covering power:





Fabric

100% cotton/linen

Nice to know

Apply one layer smoothly, as the ink will sink in easily and spread because of the fabric's fibres. To fix your creation, iron the fabric without steam at low temperature.

Tips

Use a cloth between your painting and the iron to avoid any paint transfer to the iron sole.

Material compatibility:



Line precision:



Covering power:





Fabric

polyester / satin

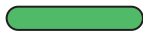
Nice to know

Apply one layer smoothly, as the ink will sink in easily and spread because of the fabric's fibres. To fix your creation, iron the fabric without steam at low temperature.

Tips

Use a cloth between your painting and the iron to avoid any paint transfer to the iron sole.

Material compatibility:

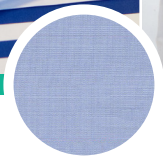


Line precision:



Covering power:





Fabric popeline

Nice to know

To avoid a blotting effect on delicate fabrics, do not hesitate to trace your contours, and color progressively with the tip. To fix your creation, iron the fabric without steam at low temperature.

Tips

Use a cloth between your painting and the iron to avoid any paint transfer to the iron sole.

Material
compatibility:



Line precision:



Covering power:



More inspiration on Instagram @pilotnordic



Leather

Nice to know

Unleash your imagination and apply 2 layers to get vibrant Pintor colors and great coverage.

Material compatibility:



Line precision:



Covering power:



Read more about Pintor on www.pilot-pintor.eu



Polystyrene

Nice to know

Apply either a single layer to keep the polystyrene texture appearance, or two for a greater covering power.

Tips

Make your artistic creation even more original by playing with the polystyrene's granular aspect.

Material compatibility:



Line precision:



Covering power:





Mineral

Nice to know

On rocks, stones and more. Apply either a single layer, or two, for vivid colors and greater coverage.

Tips

For outdoor use, apply varnish to protect from cold, heat and direct sunlight.

Material compatibility:



Line precision:



Covering power:





www.pilotnordic.com

 @pilotnordic