

 **PILOT**

**BORN**

to

**CREATE**

**PINTOR**

WATER-BASED PIGMENT INK PAINT MARKER

#HAPPYWRITING



# PINTOR

CLASSIC



FUN



F  
2.9mm\*



M  
4.5mm\*

PASTEL



METAL



- MULTI-SURFACE
- ULTRA-RESISTANT & OPAQUE INK
- DRIES QUICKLY
- PERFECT FOR DIY\*\* ACTIVITIES
- VIVID AND MIXABLE SHADES OF COLOURS
- VERY HIGHLY RESISTANT TIP



\*Writing width  
\*\* Do it yourself

# Everything you need to know

## HOW TO PRIME THE TIP

Shake about 20 times before use,  
with the cap on.  
Prime the tip by pressing 3-4 times  
on a piece paper until the ink flows.

## ARE PILOT PINTOR PENS REFILLABLE?

Pilot Pintor pens are not refillable.

## HOW TO STORE THEM

Store with the tip pointing up.



# #HAPPYWRITING



More inspiration on Instagram @pilotnordic

# Multi-surface

A PERFECT HOLD ON ANY MATERIAL

	How to fix paint for best results & water resistance	Covering power	Line precision	Material compatibility
Wood	Apply varnish			
Melamine wood	160°C 50 min			
Glass	160°C 50 min			
Frosted glass	160°C 50 min			
Plastic	Spray on varnish			
Metal - Steel	Spray on varnish			
Aluminium	/			
Paper	/			
Carton	/			
Polystyrene	/			
Porcelain	160°C 50 min			
Fabric	No steam			
100% cotton/linen	No steam			
Fabric polyester/satin	No steam			
Fabric popeline	No steam			
Leather	Specific varnish			
Mineral	Spray on varnish			



# Paper

## Nice to know

Compatible with all types of paper, such as drawing paper, dark paper, tracing paper, papier-mâché and more. The ink is absorbed directly, there is no need to fix to make it last.

## Tips

Apply thin layers so that the paper does not buckle.

Material compatibility:



Line precision:



Covering power:





# Carton

## Nice to know

Perfectly suitable for all types of carton: cardboard, solid, corrugated board and more.

## Tips

Apply a single layer on the surface.

Material compatibility:



Line precision:



Covering power:





# Wood

## Nice to know

On wood and other treated lumber, apply a layer of glossy or matt acrylic varnish with a paintbrush to give a nice finish.

## Tips

Sand the surface before painting.

Material compatibility:



Line precision:



Covering power:







# Glass

## Nice to know

Apply 2 layers to get vibrant Pintor colors and great coverage. Put in the oven: 160°C for 50 minutes. As a finishing touch, apply varnish to protect your creation.

## Tips

Best compatibility with metal colors.  
Wait a few minutes until your paint dries before applying a second layer.

Material compatibility:



Line precision:



Covering power:





# Frosted glass

## Nice to know

Apply 2 coats to obtain vivid colors and great coverage. Put in the oven: 160°C for 50 minutes. Lastly, apply a varnish to protect your creation.

## Tips

Best compatibility with metal colors.  
Wait a few minutes until your paint dries before applying a second coat.

Material compatibility:



Line precision:



Covering power:





# Porcelain

## Nice to know

Apply 2 coats to get vibrant colors and great coverage. Put in the oven: 160°C for 50 minutes. As a finishing touch, apply varnish to protect your creation.

## Tips

Best compatibility with metal colors. Wait a few minutes until your creation dries before applying a second coat.

Material compatibility:



Line precision:



Covering power:





# Plastic

especially PP

## Nice to know

Apply 2 layers to get vibrant colors and great coverage. To protect your creation, use a transparent varnish with a mat or glossy finish, depending on your original plastic's aspect.

## Tips

Wait a few minutes until your paint dries before applying a second layer.

Material compatibility:



Line precision:



Covering power:





# Metal-Steel

Aluminium - Epoxy coated

## Nice to know

Apply 2 coats to get vibrant colors and great coverage. To protect your creation, a transparent varnish can be used as a final touch.

## Tips

If you have made a mistake, rinse the paint with clear water before it dries.

Material compatibility:



Line precision:



Covering power:





# Fabric

100% cotton/linen

## Nice to know

Apply one layer smoothly, as the ink will sink in easily and spread because of the fabric's fibres. To fix your creation, iron the fabric without steam at low temperature.

## Tips

Use a cloth between your painting and the iron to avoid any paint transfer to the iron sole.

Material compatibility:



Line precision:



Covering power:





# Fabric

polyester / satin

## Nice to know

Apply one layer smoothly, as the ink will sink in easily and spread because of the fabric's fibres. To fix your creation, iron the fabric without steam at low temperature.

## Tips

Use a cloth between your painting and the iron to avoid any paint transfer to the iron sole.

Material compatibility:

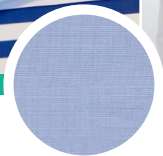


Line precision:



Covering power:





# Fabric popeline

## Nice to know

To avoid a blotting effect on delicate fabrics, do not hesitate to trace your contours, and color progressively with the tip. To fix your creation, iron the fabric without steam at low temperature.

## Tips

Use a cloth between your painting and the iron to avoid any paint transfer to the iron sole.

Material  
compatibility:



Line precision:



Covering power:



More inspiration on Instagram @pilotnordic





# Leather

## Nice to know

Unleash your imagination and apply 2 layers to get vibrant Pintor colors and great coverage.

Material compatibility:



Line precision:



Covering power:



Read more about Pintor on [www.pilot-pintor.eu](http://www.pilot-pintor.eu)



# Polystyrene

## Nice to know

Apply either a single layer to keep the polystyrene texture appearance, or two for a greater covering power.

## Tips

Make your artistic creation even more original by playing with the polystyrene's granular aspect.

Material compatibility:



Line precision:



Covering power:





# Mineral

## Nice to know

On rocks, stones and more. Apply either a single layer, or two, for vivid colors and greater coverage.

## Tips

For outdoor use, apply varnish to protect from cold, heat and direct sunlight.

Material compatibility:



Line precision:



Covering power:





[www.pilotnordic.com](http://www.pilotnordic.com)

 @pilotnordic